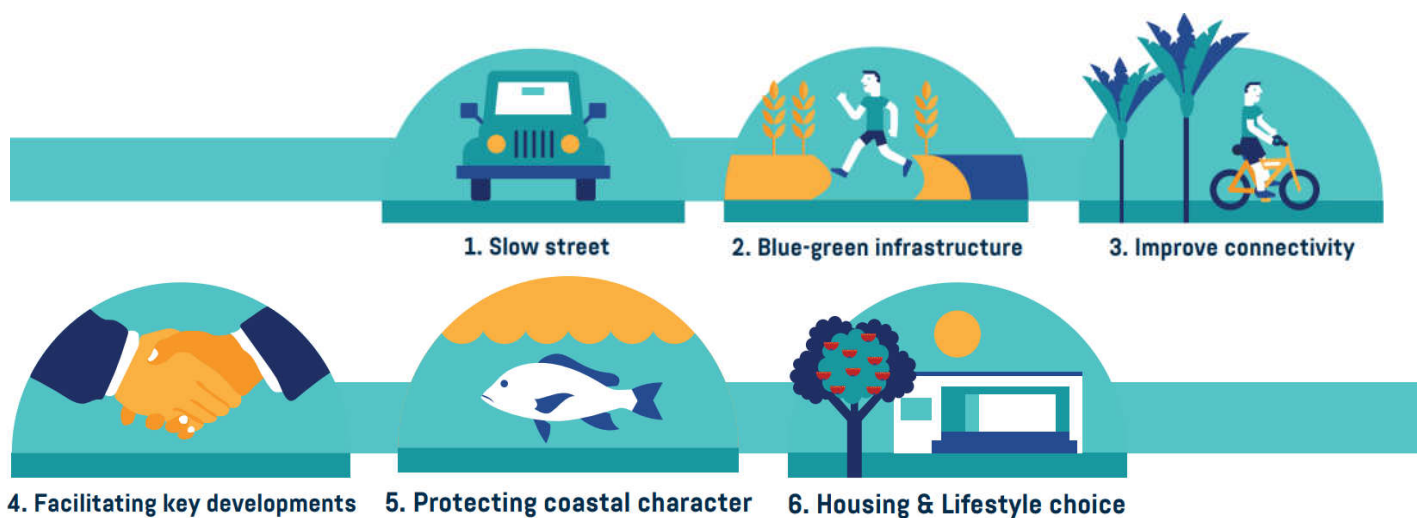


Mangawhai Coastal Walkway



You told us that you are here because of the beach, the bush, the active way of life, the informality and the slower pace. You value community; lots of volunteering, looking after our environment, looking after each other. You do not want to lose these things as Mangawhai grows. We have reflected this in the following six key moves.



Coastal Access is present in three of the five key moves, Blue- green infrastructure, improving connectivity and protecting coastal character and history.

The purpose of this project is to determine the current provision and future options for increasing non-vehicular coastal access in Mangawhai.

KDC has partnered with Resilio to complete a comprehensive feasibility study to determine current use of coastal access routes, impacts on current access routes and options for route improvements in the short and longer term.

The project team proposes to share key findings with the Mangawhai Community for feedback and to identify opportunities for community participation in the development of improved access routes.

Both the feasibility study and engagement should allow KDC and the Mangawhai Community to:

- Identify a list of viable project plans for physical improvements to coastal access routes that are supported by residents and the community.
- Make high quality improvements to enhance existing routes and new routes developed using best practice participative design guidelines, construction and wayfinding.

Mangawhai Community Plan

Making it happen

Any feedback or questions may be directed to:

MangawhaiCommunityPlanProject@kaipara.govt.nz



Supporting Documentation

Strategy / Plan	Description
<p style="text-align: center;">Walking and Cycling Strategy</p>	<p>This Strategy considers the national, regional and local frameworks that walking and cycling initiatives in the Kaipara district seek to align with. In particular, contributing to the vision of a regional framework for Northland, desired by NZ Cycle Trails. The Walking and Cycling Strategy integrates the Council's vision through three objectives:</p> <p>OBJECTIVE 1: Become a walking and cycling destination to support economic growth, and provide transport and lifestyle choices - Route linking Mangawhai with the cycling trail from Waipu in the North and Pakiri and Matakana in the south. Support this to become a Heartland Ride;</p> <p>OBJECTIVE 2: Partner with key stakeholders and community to deliver walking and cycling projects and behaviour change initiatives .</p> <p>OBJECTIVE 3: Develop district wide and township walking and cycling networks that are safe, enduring and connect with nature.</p> <p>Public consultation was completed throughout 2016/17.</p> <p>The Walking and Cycling Strategy was adopted by Council at its 14 August 2017 meeting. Moved by Wade/Joyce-Paki, carried.</p> <p>Mangawhai Coastal Connections was identified as a key project to begin construction 2018/19.</p> <p>The key projects identified have been provisioned for in the Kaipara District Council's Long Term Plan.</p>
<p style="text-align: center;">Mangawhai Community Plan</p>	<p>The Mangawhai Community Plan (MCP) is a community led and designed document to provide guidance to Kaipara District Council in the management of growth in Mangawhai. This plan is confined to the roles of Council, these being; planning and regulation, and investment in services and infrastructure for transport, water supply, storm water, wastewater, and parks and reserves.</p> <p>In mid-2016, Council set up a panel of community representatives to make recommendations for Mangawhai. Their recommendations were received and approved by Council in July 2017.</p> <p>The MCP was received by Council at its 20 January 2018 meeting.</p> <p>The MCP was adopted by Council at its 28 February 2018 meeting. Moved by Geange/Wethey, carried.</p> <p>Mangawhai Coastal Connections was identified as a priority one project to begin construction 2018/19.</p> <p>The Priority One projects identified have been provisioned for in the Kaipara District Council's Long Term Plan.</p>
<p style="text-align: center;">Long Term Plan</p>	<p>The Local Government Act 2002 (LGA) requires every council to produce a Long Term Plan (LTP) every three years.</p> <p>The LTP outlines our activities and priorities for the next 10 years, providing a long term focus for decision-making. It also explains how work will be scheduled and funded.</p> <p>Under the LGA, LTPs must be reviewed every three years with full consultation with the public each time. An Annual Plan is developed in the years in between.</p> <p>The Council held briefings across the district to discuss options and directions for setting the Long Term Plan 2018/2028. These meetings were open to the public.</p> <p>Council adopted the Long Term Plan 2018/2028 at their Council meeting held Tuesday 26 June 2018. Moved by Smith/Wethey, carried.</p> <p>Mangawhai Coastal Connections was identified as a planned improvement to Reserves and Open Spaces in Year One – 2018/19, Year Two – 2019/20 and Year Three 2020/21.</p>

